



## Call for Price

### 2 Elevations Available

 4,400

 6

 4.5

 2

 3

The beautiful Kensington Plan was created specifically for the desirable Green Lake neighborhood. It boasts 4000 sq feet with 6 bedrooms and 4.25 baths. This home comes with a rare additional 400 sq. ft. ADU (accessory dwelling unit) located above the 2 car garage for bonus living options or as an income-producing space.

The Main Level includes a spacious gourmet Kitchen adjoining a Butler's Pantry and formal Dining Room with coffered ceiling and crown moldings. It has an Eating Nook off the kitchen with large windows surrounding it giving views of the backyard. There is also an Office off the Foyer with storage space and built-in bookshelves.

The Second Level features a Master Suite with a soaring vaulted ceiling, huge walk-in closet and a luxurious Master Bathroom with a free-standing soaking tub. The second level of the Kensington also includes 3 additional bedrooms; one of which is a full guest suite with walk-in closet and attached private bath. The other two bedrooms also have their very own walk-in closets and are adjoined by a Jack-and-Jill bath.

The Attic Level has an enormous Rec/Media Room with vaulted ceilings, as well as a Bath with tiled walk-in shower, and 2 additional bedrooms.

An amazing feature of this home, in addition to its detached 2 car garage, is the Accessory Dwelling Unit above the garage that comes with vaulted ceilings. This space is ideal for utilizing as an income-producing space or works well for long term guests. The ADU features a bedroom with a living/dining area, a full bath, kitchen, and closet area for a washer and dryer.



[AmericanClassicHomes.com](http://AmericanClassicHomes.com)

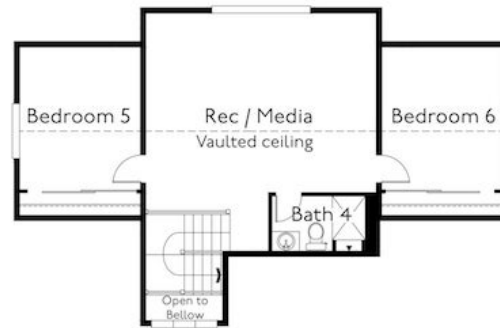
Pricing, features, and availability are subject to change without notice. American Classic Homes makes reasonable efforts to provide accurate information, however, no warranties or representations are made as to its accuracy and American Classic Homes assumes no liability or responsibility for any errors in pricing content. All pricing information, including promotions and incentives, must be verified by an authorized representative for the appropriate community and home. Photography, floor plans, elevations, renderings, virtual tours, maps, square footage, and dimensions are approximate and for illustration purposes only, and will vary from homes as built and are subject to change without notice. Homes in each neighborhood may be owned and sold by a separate limited liability company (LLC) or other corporate entity.



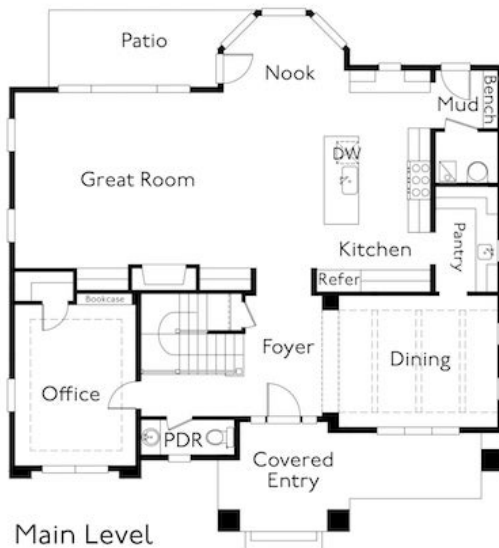
American  
ClassicHomes



The Kensington



Attic Level



American  
ClassicHomes



[AmericanClassicHomes.com](http://AmericanClassicHomes.com)

Pricing, features, and availability are subject to change without notice. American Classic Homes makes reasonable efforts to provide accurate information, however, no warranties or representations are made as to its accuracy and American Classic Homes assumes no liability or responsibility for any errors in pricing content. All pricing information, including promotions and incentives, must be verified by an authorized representative for the appropriate community and home. Photography, floor plans, elevations, renderings, virtual tours, maps, square footage, and dimensions are approximate and for illustration purposes only, and will vary from homes as built and are subject to change without notice. Homes in each neighborhood may be owned and sold by a separate limited liability company (LLC) or other corporate entity.