



## Call for Price

### 1 Elevations Available

	4,474
	5
	4.5
	3
	2

This meticulously designed floor plan spans 4,474 sq ft, offering 5 bedrooms, 4.5 bathrooms, a media room, den and separate prep kitchen with walk-in pantry. The heart of the home is an open-concept living space integrating the kitchen, dining, and family room. The main level features a bedroom, perfect for guests or multi-generational living. The primary suite, located on the second floor, boasts an oversized walk-in closet and a spa-inspired bathroom with a soaking tub and shower. Each additional bedroom is thoughtfully designed for comfort and privacy. The upper level also includes a media room and a convenient laundry room. A 3-car garage provides ample space for vehicles and storage, catering to modern lifestyles.

- Covered front porch and covered back patio
- 3-car garage
- A spacious open-concept living space
- Prep kitchen with walk-in pantry
- Generously sized island
- Den on the main level
- large guest bedroom with ensuite on the main level
- Oversized walk-in closet in the primary bedroom
- Spa-inspired master bathroom with soaking tub and shower
- Upper-level media room
- Convenient second-floor laundry room



[AmericanClassicHomes.com](https://AmericanClassicHomes.com)

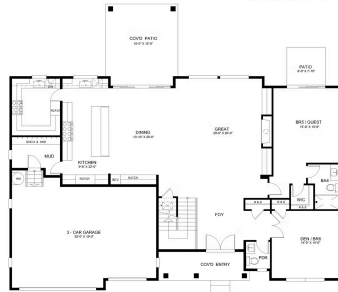
Pricing, features, and availability are subject to change without notice. American Classic Homes makes reasonable efforts to provide accurate information, however, no warranties or representations are made as to its accuracy and American Classic Homes assumes no liability or responsibility for any errors in pricing content. All pricing information, including promotions and incentives, must be verified by an authorized representative for the appropriate community and home. Photography, floor plans, elevations, renderings, virtual tours, maps, square footage, and dimensions are approximate and for illustration purposes only, and will vary from homes as built and are subject to change without notice. Homes in each neighborhood may be owned and sold by a separate limited liability company (LLC) or other corporate entity.



American  
ClassicHomes



4024 85th Ave SE  
Oakmont Plan 4474 SF



Main Floor Plan



Upper Floor Plan

[www.AmericanClassicHomes.com](http://www.AmericanClassicHomes.com)  
Renderings and floor plans are artist's concept and for illustrative purposes only. Standard features may vary by community. Floor plans, dimensions, garages and patios may not be available in all communities upon all home sites. In a continuing effort provide a quality product, we reserve the right to change floor plans, elevations, specifications and prices without notice.



[AmericanClassicHomes.com](http://AmericanClassicHomes.com)

Pricing, features, and availability are subject to change without notice. American Classic Homes makes reasonable efforts to provide accurate information, however, no warranties or representations are made as to its accuracy and American Classic Homes assumes no liability or responsibility for any errors in pricing content. All pricing information, including promotions and incentives, must be verified by an authorized representative for the appropriate community and home. Photography, floor plans, elevations, renderings, virtual tours, maps, square footage, and dimensions are approximate and for illustration purposes only, and will vary from homes as built and are subject to change without notice. Homes in each neighborhood may be owned and sold by a separate limited liability company (LLC) or other corporate entity.