



## Call for Price

### 2 Elevations Available

	4,200
	5
	4.5
	3
	2

The Rosario is one of American Classic Homes' most popular floor plans. With 4,200 square feet of luxurious living space, it features 5 bedrooms and 4.25 baths. The main floor boasts ten-foot-ceilings and eight-foot-doors. You enter the home under the covered porch through elegant double doors into a spacious 2-story Foyer that contains a beautiful curved staircase.

Past the Foyer, lies the Formal Dining room that will serve all your entertaining needs. It has a must see coffered ceiling with crown molding detail, as well as a built in buffet for added serving space and storage. In addition to that, you have a Butlers Pantry that provides direct access from the Dining Room to the Kitchen. The Butlers Pantry provides extra space to prep as well as additional storage in the large walk-in pantry.

The Rosario offers a stunning gourmet Kitchen with an over-sized island and commercial grade style stainless steel appliances. Adjacent to the kitchen, the Nook area is the ideal space for your casual day to day eating, while the covered back patio is the perfect space to extend your entertaining. The Family Room, which opens to the Nook and Kitchen boasts an amazing open space with large windows and a cozy fireplace.

The main floor includes a wonderful Guest Suite with its own private bathroom, perfect for long term guests or as an in-law suite. The bath features designer touches and walk-in tiled shower to create a private and easily accessible space for your guests.

Upstairs the Master Suite showcases a soaring vaulted ceiling that opens to a wall of expansive windows. Walk through the French Doors to the five-piece en-suite Master Bath which consists of luxurious finishes, walk-in shower with tile



[AmericanClassicHomes.com](http://AmericanClassicHomes.com)

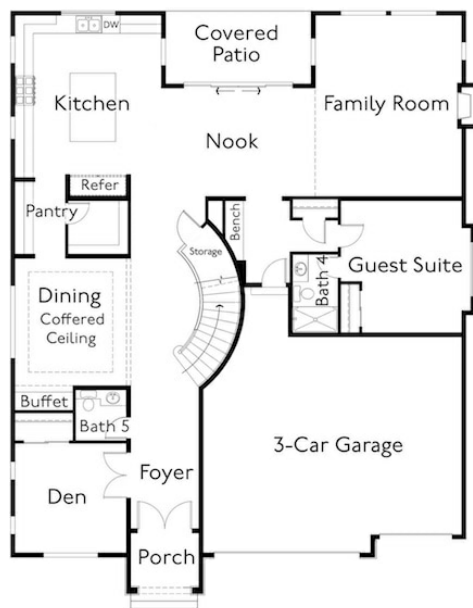
Pricing, features, and availability are subject to change without notice. American Classic Homes makes reasonable efforts to provide accurate information, however, no warranties or representations are made as to its accuracy and American Classic Homes assumes no liability or responsibility for any errors in pricing content. All pricing information, including promotions and incentives, must be verified by an authorized representative for the appropriate community and home. Photography, floor plans, elevations, renderings, virtual tours, maps, square footage, and dimensions are approximate and for illustration purposes only, and will vary from homes as built and are subject to change without notice. Homes in each neighborhood may be owned and sold by a separate limited liability company (LLC) or other corporate entity.



# American ClassicHomes



The Rosario 4200



Main Level



Upper Level



[AmericanClassicHomes.com](http://AmericanClassicHomes.com)

Pricing, features, and availability are subject to change without notice. American Classic Homes makes reasonable efforts to provide accurate information, however, no warranties or representations are made as to its accuracy and American Classic Homes assumes no liability or responsibility for any errors in pricing content. All pricing information, including promotions and incentives, must be verified by an authorized representative for the appropriate community and home. Photography, floor plans, elevations, renderings, virtual tours, maps, square footage, and dimensions are approximate and for illustration purposes only, and will vary from homes as built and are subject to change without notice. Homes in each neighborhood may be owned and sold by a separate limited liability company (LLC) or other corporate entity.