

6321 NE 61ST STREET
Seattle, WA 98115



CALL TODAY
(206) 966-6429



SOLD

LOCATION

6347 NE 61st Street, Seattle WA
Windermere Spot Lots

PLAN

Radford

 3,572 |  5 |  3.5 |  2 |  3



AmericanClassicHomes.com

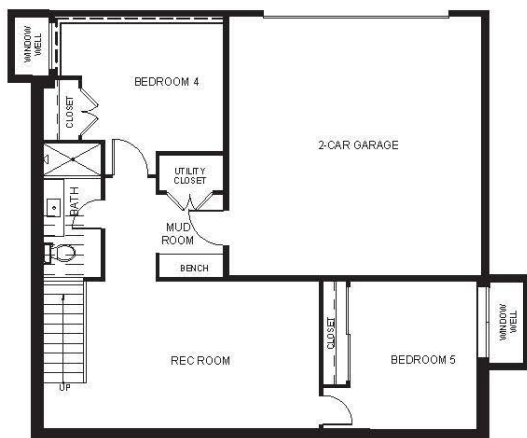
Pricing, features, and availability are subject to change without notice. American Classic Homes makes reasonable efforts to provide accurate information, however, no warranties or representations are made as to its accuracy and American Classic Homes assumes no liability or responsibility for any errors in pricing content. All pricing information, including promotions and incentives, must be verified by an authorized representative for the appropriate community and home. Photography, floor plans, elevations, renderings, virtual tours, maps, square footage, and dimensions are approximate and for illustration purposes only, and will vary from homes as built and are subject to change without notice. Homes in each neighborhood may be owned and sold by a separate limited liability company (LLC) or other corporate entity.



American ClassicHomes



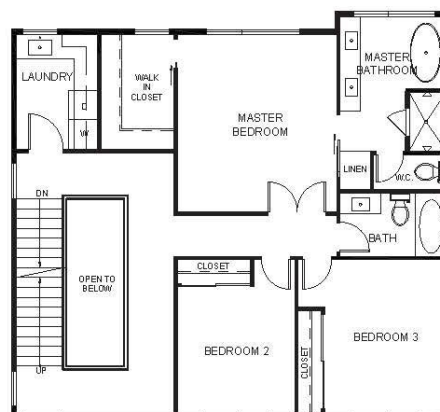
Windermere 6321 NE 61st St
Radford Plan 3,572 sf



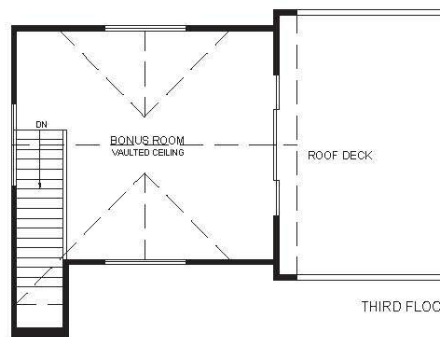
BASEMENT



MAIN FLOOR



SECOND FLOOR



THIRD FLOOR

www.AmericanClassicHomes.com



AmericanClassicHomes.com

Pricing, features, and availability are subject to change without notice. American Classic Homes makes reasonable efforts to provide accurate information, however, no warranties or representations are made as to its accuracy and American Classic Homes assumes no liability or responsibility for any errors in pricing content. All pricing information, including promotions and incentives, must be verified by an authorized representative for the appropriate community and home. Photography, floor plans, elevations, renderings, virtual tours, maps, square footage, and dimensions are approximate and for illustration purposes only, and will vary from homes as built and are subject to change without notice. Homes in each neighborhood may be owned and sold by a separate limited liability company (LLC) or other corporate entity.