



Call for Price

3 Elevations Available

 4,952

 6

 5.5

 2

 3

The Windsor home plan was created specifically for the Madison Park neighborhood. The home plan boasts 4,952 square feet of living space and offers 6 bedrooms and 4.25 baths. This home comes with an additional 400 sq. ft. ADU (accessory dwelling unit) located above the 2-car garage, for optional bonus living space or utilize it as an income-producing space.

The open main level includes a spacious gourmet kitchen and dining room with a beautiful must-see beamed ceiling. The bright and open kitchen offers an impressively sized slab island with seating and professional style appliances. For additional seating options, the kitchen's nook provides a casual eating experience and features a custom bench. The large dining room features a similar must-see beamed ceiling. The great room features an impressive fireplace, a built-in bookcase, and it gives direct access to the home's patio.

Additionally, on the main level, you will find the home's private office with a built-in bookcase. The office offers the option to be utilized as the main level guest bedroom, due to its large closet and that it is adjacent to the main level's powder bathroom.

The second level features the grand master suite that includes its very own fireplace, two convenient walk-in closets, and a spa-inspired 5-piece master bathroom. Also on this level are 3 additional bedrooms, each with direct access to a bathroom and have spacious closets.

The third level has an enormous Rec/Media Room, as well as a bath with a walk-in shower, and 2 additional bedrooms.

Above the home's 2-car garage is an additional 400 sq. ft. of living space, which is perfect for extended stay guests. The



AmericanClassicHomes.com

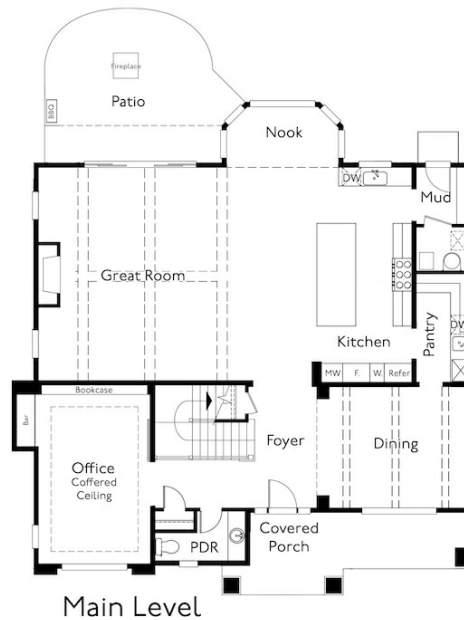
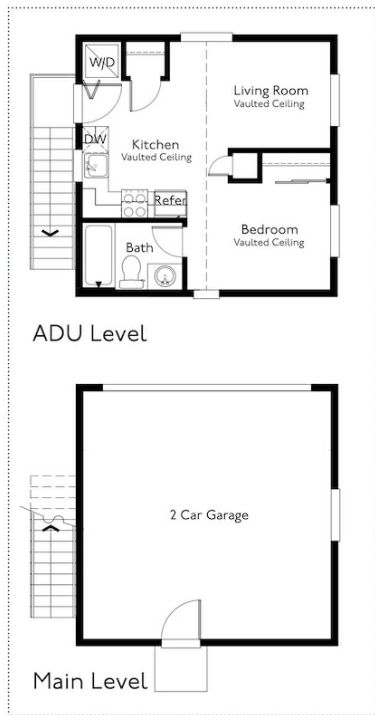
Pricing, features, and availability are subject to change without notice. American Classic Homes makes reasonable efforts to provide accurate information, however, no warranties or representations are made as to its accuracy and American Classic Homes assumes no liability or responsibility for any errors in pricing content. All pricing information, including promotions and incentives, must be verified by an authorized representative for the appropriate community and home. Photography, floor plans, elevations, renderings, virtual tours, maps, square footage, and dimensions are approximate and for illustration purposes only, and will vary from homes as built and are subject to change without notice. Homes in each neighborhood may be owned and sold by a separate limited liability company (LLC) or other corporate entity.



American ClassicHomes



Windsor 4952



AmericanClassicHomes.com

Pricing, features, and availability are subject to change without notice. American Classic Homes makes reasonable efforts to provide accurate information, however, no warranties or representations are made as to its accuracy and American Classic Homes assumes no liability or responsibility for any errors in pricing content. All pricing information, including promotions and incentives, must be verified by an authorized representative for the appropriate community and home. Photography, floor plans, elevations, renderings, virtual tours, maps, square footage, and dimensions are approximate and for illustration purposes only, and will vary from homes as built and are subject to change without notice. Homes in each neighborhood may be owned and sold by a separate limited liability company (LLC) or other corporate entity.